



## Accelerated Returns for Quicker Credit

Parts and Service Solutions for POWER

U.S.

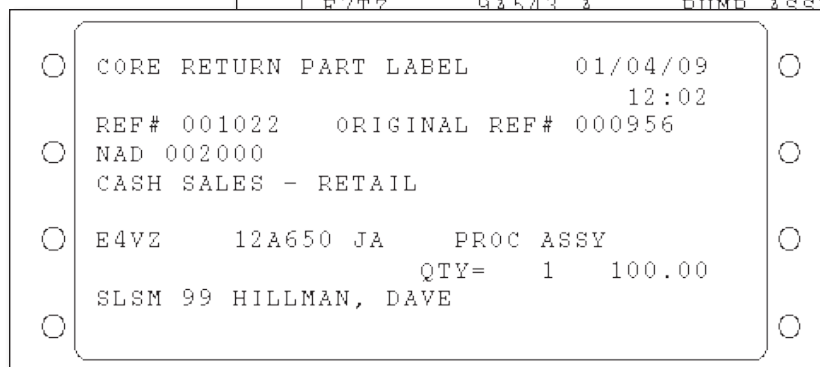
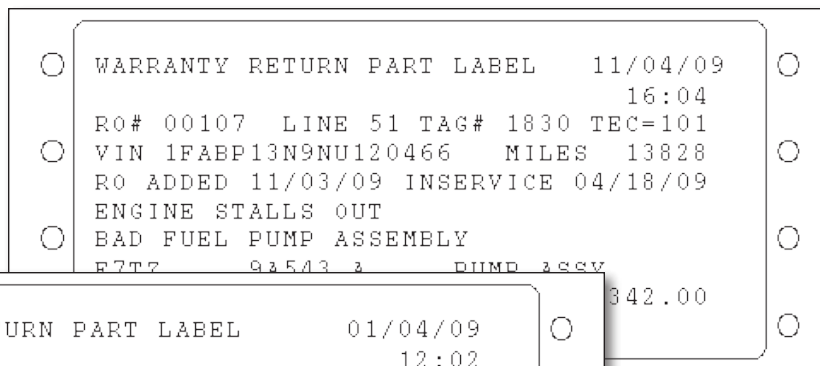
Parts Label Printer for POWER

Increase your efficiency and profitability with labels that can streamline core and warranty credit returns and parts inventory management.

### Where Credit is Due

Submitting parts for core or warranty credits can be a very time intensive task. Accelerate the process with Parts Label Printer (PLP).

- Print core return and warranty hold labels.
- Attach labels directly to the parts for shipment to the manufacturer.
- Publish all necessary information for core return labels, including part number, part description, and service data.
- Publish all necessary information for warranty hold labels, including VIN, mileage, and complaint and correction codes.
- Expedite the return process for faster turnaround of parts and credits.



Print labels with necessary return information.

### Organized and Efficient

Manage your parts inventory and locate parts easier with detailed labels. Using Parts Label Printer, you can:

- Print and attach picking ticket labels for parts sold to a repair order.
- Ensure detailed information is contained on each label, including repair order number, part number, and part quantity sold.
- Quickly locate and identify parts for pick-up and parts to be pulled for orders.

### Labels Now

Reduce the time spent manually requesting and printing parts labels. When critical actions are taken, Parts Label Printer can automatically print necessary labels for your parts. For example, a warranty hold part label is printed when the warranty indicator is removed from the parts invoice, dramatically increasing efficiency.

### A Better Way

Managing your parts inventory can be a tremendous undertaking. Use Parts Label Printer for POWER to streamline your return process and increase your profitability.

○	CORE RETURN PART LABEL	01/04/09	○
		16:04	
	RO# 00107 LINE 51 TAG# 1830		
○	VIN 1FABP13N9NU120466	MILES 13828	○
	RO ADDED 01/03/09	INSERVICE 08/18/08	
	ENGINE STALLS OUT		
○	BAD FUEL PUMP ASSEMBLY		○
	E7TZ 9A543 2	DIUMD 3CCV	
		100.00	
○	RO# 00179	01/04/09 11:45	○
	LN PART NUMBER/DESC	QTY EXT NET MN	
	51 F0TZ7153B KIT TRANS	1 39.34 99	
○	51 E9TZ7A098C KIT OIL P	1 12.27 99	○
	51 E5TZ7A130A SUPPORT A	1 25.36 99	
	51 E5TZ7A089A CLUTCH AS	1 18.59 99	
○	51 F2TZ7B446B *CARRIER	1 71.80 99	○
	51 E5TZ7L495A *BRG ASY	1 3.64 99	
	51 E5TZ7A153A GEAR TRAN	1 16.58 99	
○	51 XT2QDX FLUID-AUT	12 17.88 99	○

*Parts Reconciliation Software generates detailed labels for returns and pick-up.*

**For more information on Parts Reconciliation Software, please contact your Reynolds Account Manager, call 800.767.7879, or e-mail [marketing@reyrey.com](mailto:marketing@reyrey.com).**



MAKING BUSINESS BETTER.